



## NEED TO RECYCLE IT, BUT NOT SURE WHERE IT GOES?

Search the A-Z online guide for responsible options near you.

Search OCRecycleGuide.com



### EVERYONE PLAYS A PART

**OC WASTE & RECYCLING** is responsible for managing the county's award-winning disposal system which includes three active landfills. These landfills reflect environmental engineering at its best. They are among the largest in the state and annually receive more than 4 million tons of solid waste.

Landfills are a valuable resource with limited capacity. As the county continues to develop rapidly with new communities and continued urbanization, landfill space is limited.

Each Orange County resident has a role and responsibility in the waste management system. A great first step is knowing the basics of reducing, reusing and recycling such as:

- Take an active role in knowing how to avoid contamination of recyclable materials, especially green waste
- Learn who your local waste hauler is as recycling requirements can vary by city
- Properly dispose of items into the correct trash, recycling or composting bins.

The average person generates approximately 4.5 pounds of waste daily, and recycling rates are continuing to decline in California and nationwide. Plus, options to send waste and recycled materials out-of-state or abroad are no longer a viable strategy.

Orange County's waste and recycling solutions must be found locally, that's why it's imperative that every citizen reduce, reuse and recycle.

By recycling right we can all do our part to extend the life of our valuable landfill resources and keep Orange County healthy, thriving and environmentally sound for generations to come.



### TIP SHEET

Although recycling at home can vary from city to city, here are some home recycling bin general rules-of-thumb to follow:



● Check with your waste hauler or property management company on what and how exactly to sort your recyclables at home. For a list of contacts by city, visit [oclandfills.com](http://oclandfills.com)

● Don't put plastic bags or other "tangles" in home recycle bins (rubber hoses, hangers, cords). They can get caught in recycling center machinery and disrupt the process

● Keep recyclables empty, clean and dry to avoid contamination

● Don't bag up recyclables in the curbside bin. Keep items loose for simpler processing

● Share recycling information with the entire family so everyone does their part to recycle right

● Don't place hazardous material such as e-waste, batteries or chemicals in the recycle bin. Visit [oclandfills.com](http://oclandfills.com) for a Household Hazardous Waste Collection Center near you

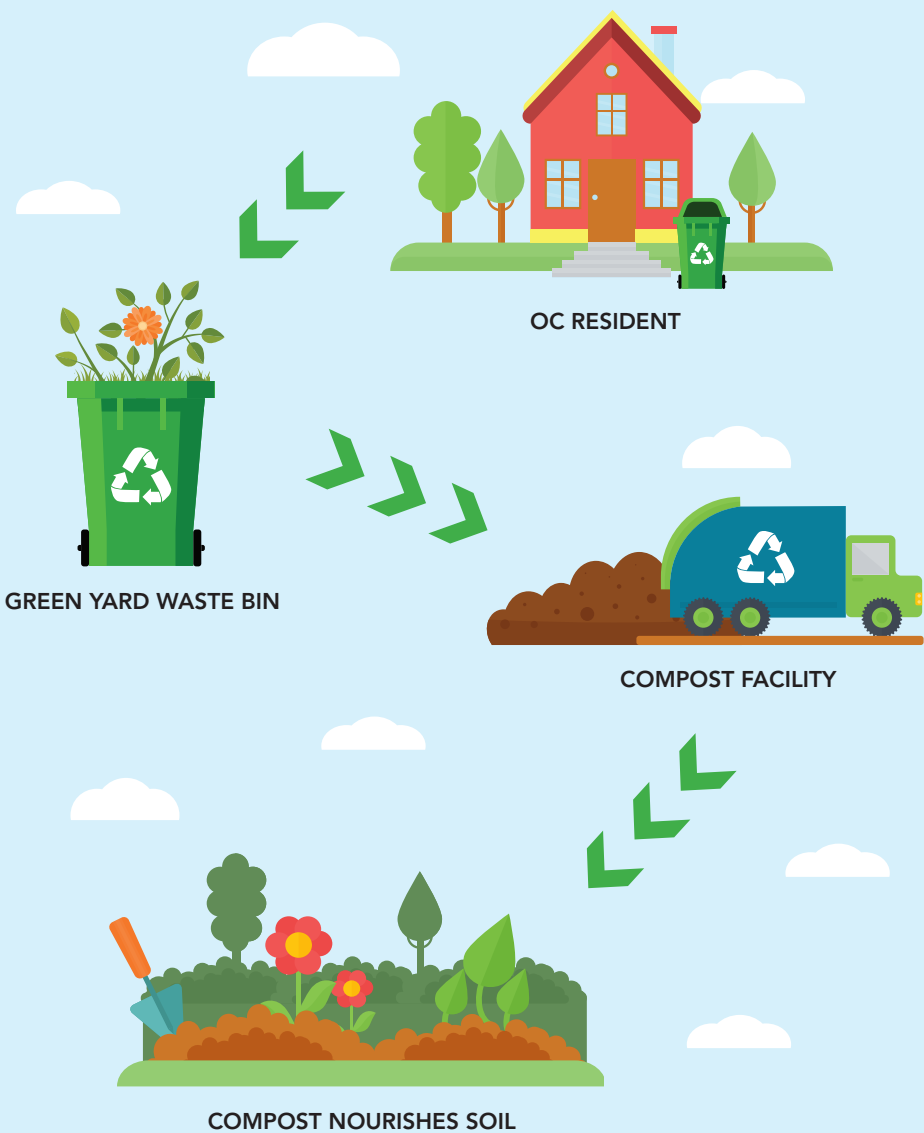
● Make sure recycle bins are in a convenient area to encourage home recycling

● Consult resources that help answer additional recycling questions such as [OCRecycleGuide.com](http://OCRecycleGuide.com), [Earth 911.com](http://Earth911.com) and [CalRecycle.org](http://CalRecycle.org)

● Don't let food, grease or other contaminants such as broken glass into the recycle bin. This can result in an entire batch being sent to the landfill instead of being recycled

## Composting is Recycling!

Your yard waste can become compost, which enriches the soil. Keep your green waste bin clean!



### New Statewide Recycling Goals

2019



Push to achieve **50% organic waste diversion** statewide (SB 1383)

2020



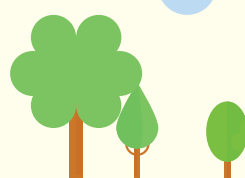
Processed green materials no longer count as diversion (AB 1594)

2022



Enforcement of organic waste diversion regulations begins

2025



California must meet statewide goals to reduce organic waste by **75% below 2014** rates and to recover **20% of edible food waste**.

Follow Us @OCWaste

